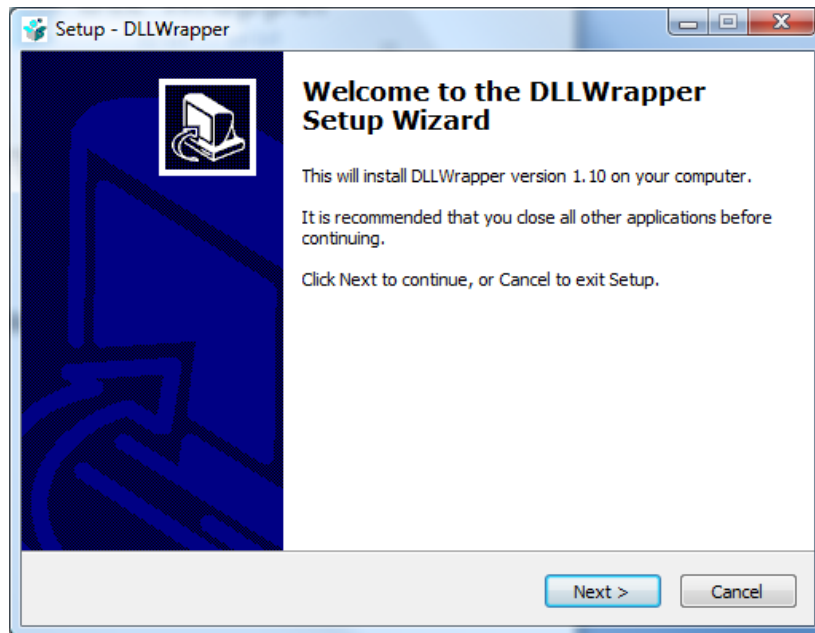


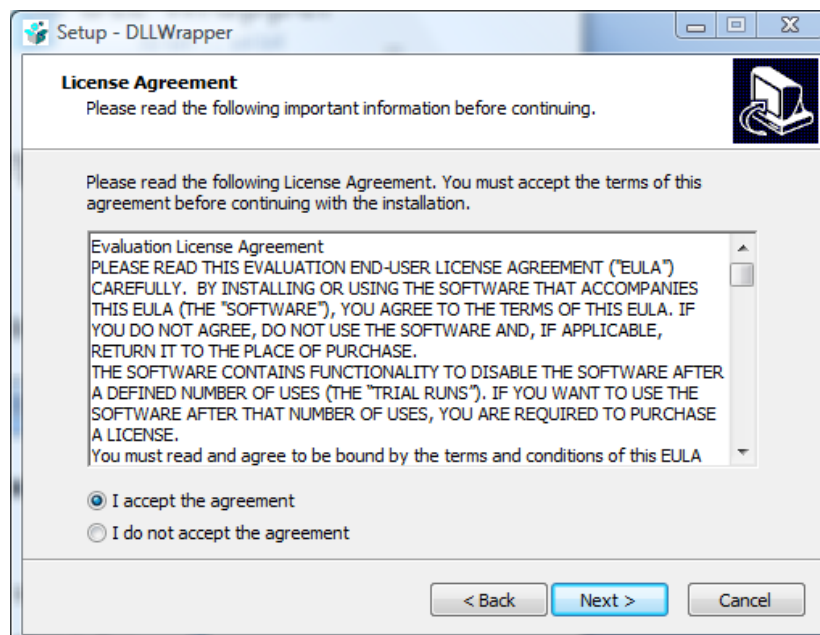
DLLWrapper Install / Uninstall step-by-step

Install

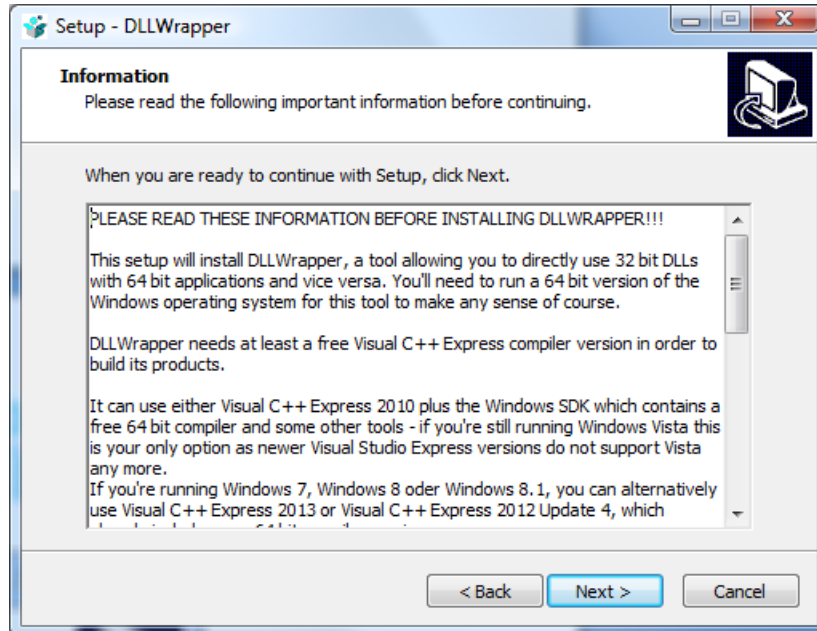
In order to install DLLWrapper, invoke the downloaded file DLLWrapperSetup.exe for instance by double-clicking on it. Your Windows system will then ask you to grant the DLLWrapper installation access to your computer. If you confirm this, the installation will start with this screen:



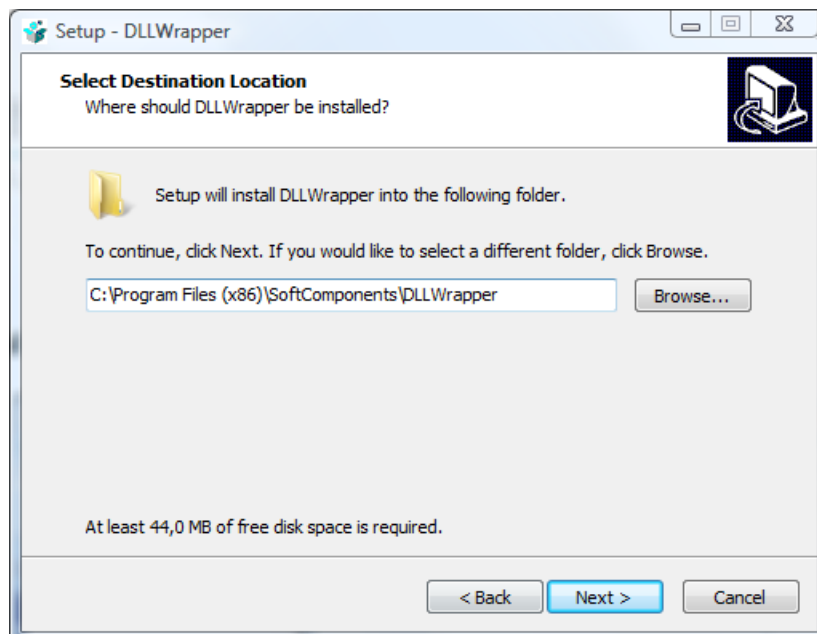
If you click next, you'll have to accept the DLLWrapper evaluation license agreement on the next screen in order to proceed with the installation:



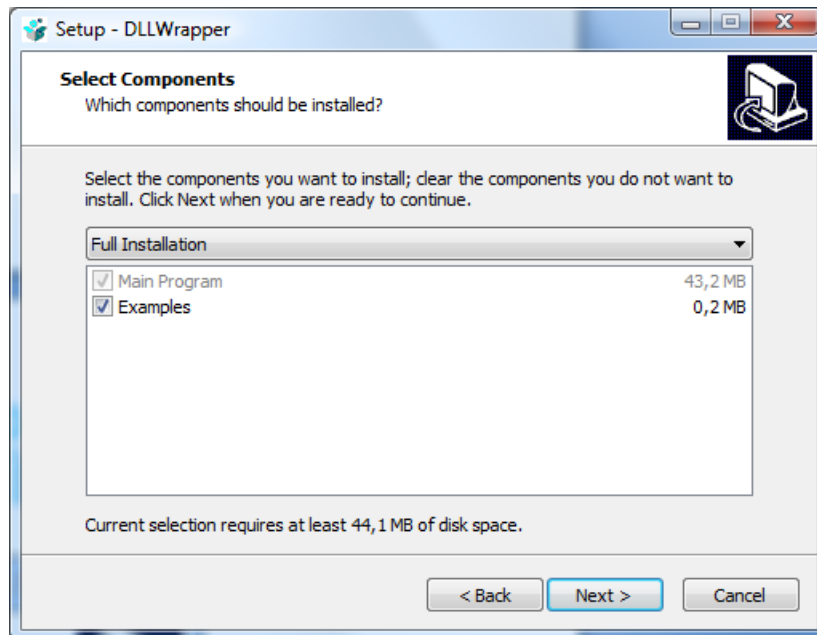
On the next screen you'll given some information about tools like VisualStudio needed by DLLWrapper that you'll have to obtain and install separately - due to legal reasons these tools could not be bundled with DLLWrapper:



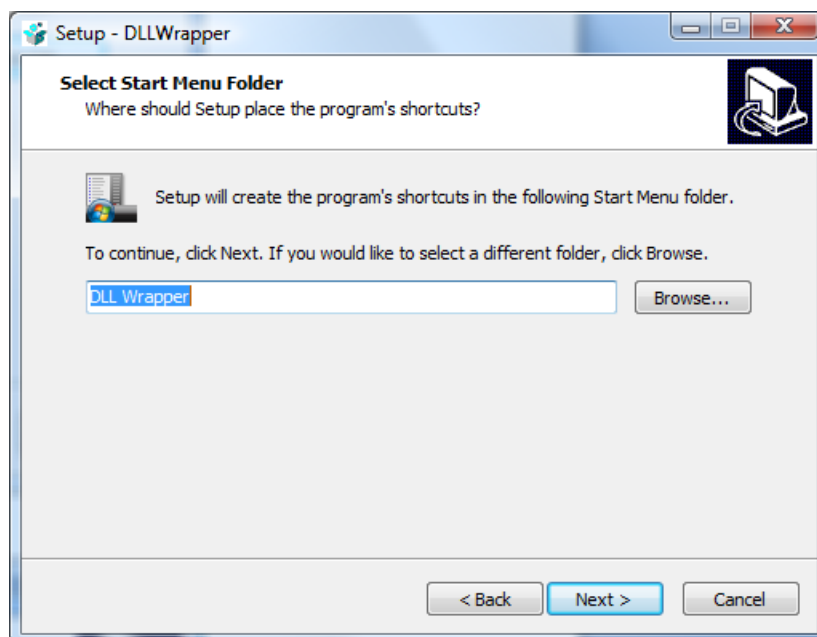
On the next screen you'll be able to select an installation location for DLLWrapper on your computer - or you simply accept the default installation path:



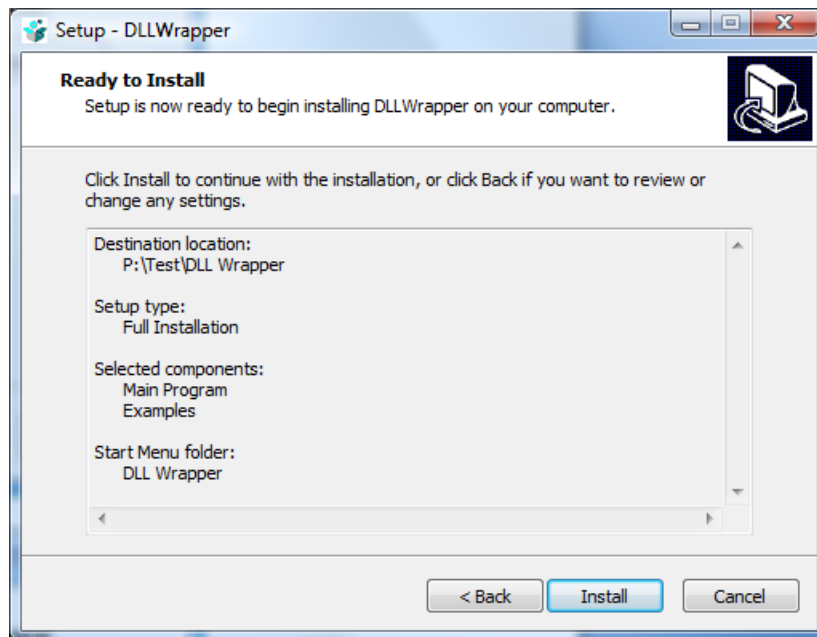
On the next screen you'll be able to select whether you'd like to install some examples for the use of DLLWrapper, too:



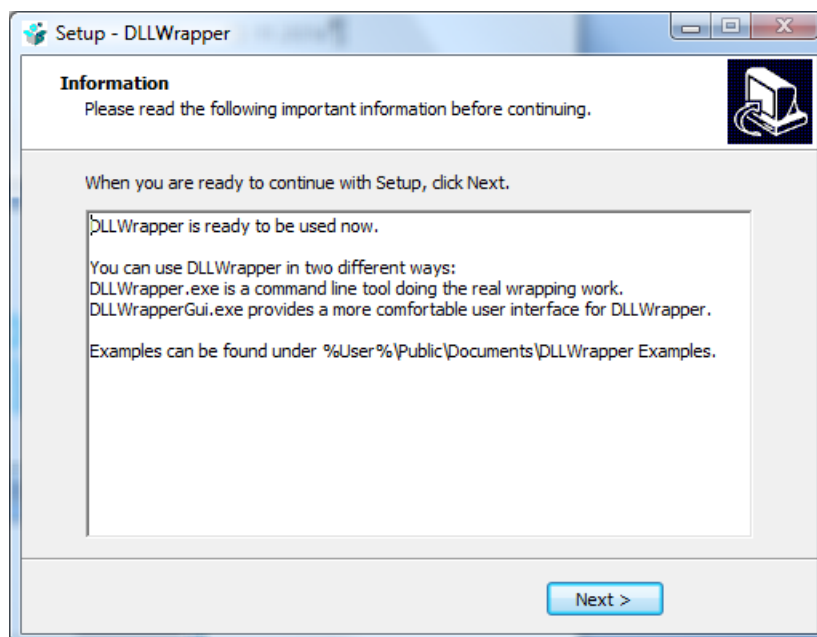
On the next screen, you'll be able to select the start menu folder:



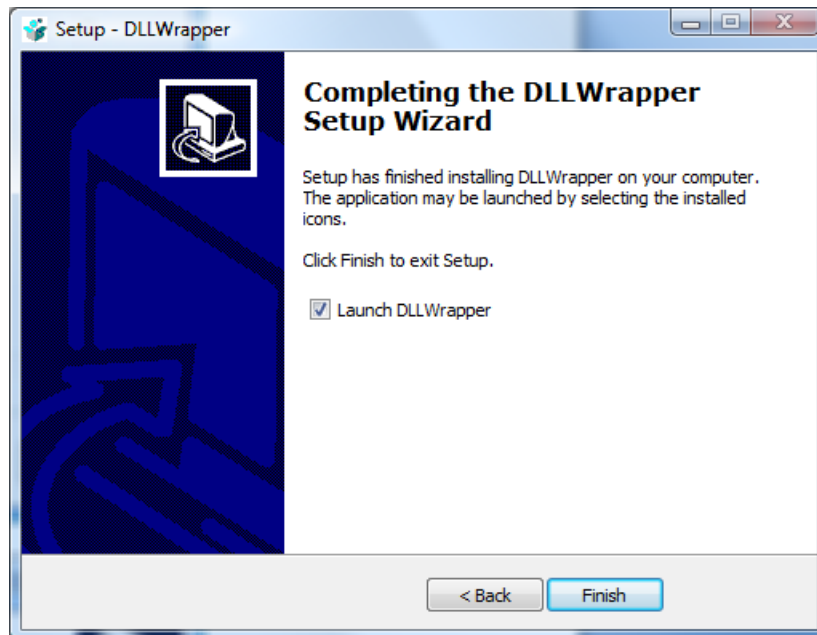
Now you're ready to install DLLWrapper by clicking on the "Install" button:



After the installation is done, some more information is displayed about how DLLWrapper can be invoked:



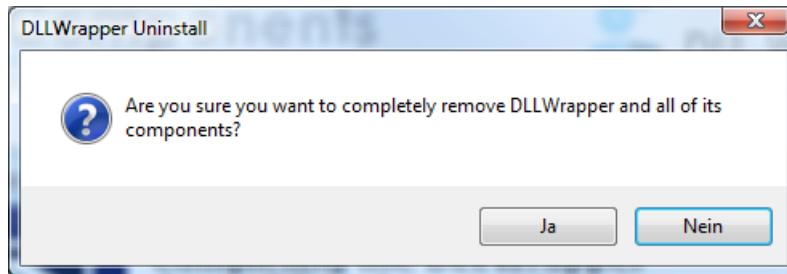
Finally you're done and you can directly launch the installed DLLWrapper by leaving the check box checked and clicking the "Finish" button.



Uninstall

You can uninstall DLLWrapper either by selecting the "Uninstall DLLWrapper" entry from the DLLWrapper start menu folder or by invoking the Windows Control Panel "Programs and Features" applet and searching for the DLLWrapper entry there to uninstall it.

If you invoked the uninstaller, you'll be asked to confirm that you're really sure to uninstall DLLWrapper:



After DLLWrapper was uninstalled, another message is displayed to complete the procedure:

